









A deceptively spacious two bedroom, two reception room mid terrace dormer cottage, situated in this popular area, just off Chester Road. Internally to the ground floor there is an entrance vestibule, hall with staircase to the first floor, a generous lounge with a bay window to the front that opens through to a dining room with patio style doors leading out to the rear courtyard. Completing the ground floor accommodation is a fitted breakfasting kitchen and a shower room, featuring a sauna. On the first floor there are two well-proportioned bedrooms and a contemporary bathroom/wc. Externally there is an enclosed courtyard to the rear with roller shutter access door and a useful store. Benefits of the property include double glazed windows and gas central heating to radiators. Ideally located within easy access to a range of local amenities including shops and schools, Sunderland Royal Hospital, The University and Sunderland City Centre, as well as offering transport links to surrounding areas. Early viewing is highly recommended!

# MAIN ROOMS AND DIMENSIONS

## Ground Floor

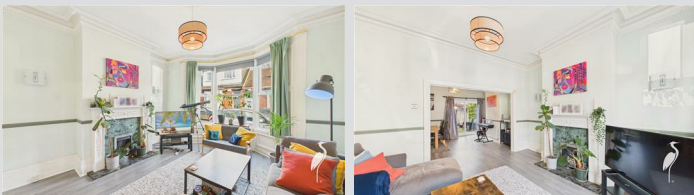
Access via double glazed entrance door, inner door leading through to the hall.

## Hallway



Radiator, two built in storage cupboards, staircase to the first floor.

## Lounge 13'1" x 14'2"



Double glazed bay window to the front, radiator, feature fireplace. decorative coving and ceiling rose, opens through into the dining room.

## Dining Room 13'2" x 12'4"



Double glazed patio door to the rear courtyard and there is radiator.

## Breakfasting Kitchen 15'9" x 10'2"



Fitted with a range of wall and base units with work surfaces over incorporating a breakfast bar and a 1 1/2 bowl sink and drainer unit. Integrated appliances include an oven and hob, space has been provided for the inclusion of a fridge freezer, washing machine, tumble dryer and a dishwasher, double glazed window to the side, wall mounted boiler, double glazed door to the courtyard, radiator and a door to the shower room.

## Shower Room/Sauna



Shower area, a double glazed window and a door providing access to the sauna.

## First Floor Landing

Doors leading off to the two bedrooms and bathroom. Built in storage cupboard.

Visit [www.peterheron.co.uk](http://www.peterheron.co.uk) or call 0191 510 3323

**Tried. Trusted. Recommended.** City Branch 20 Fawcett Street Sunderland SR1 1RH Fulwell Branch 15 Sea Road Fulwell Sunderland SR6 9BS

# MAIN ROOMS AND DIMENSIONS

## Bedroom 1 10'2" x 17'0"



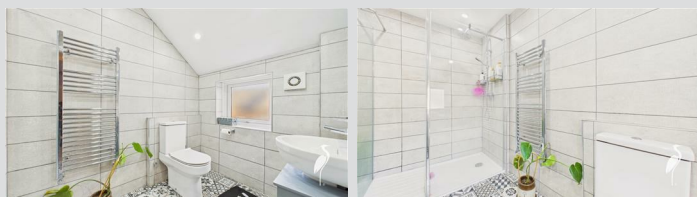
Double glazed window to the front, radiator and fitted wardrobes.

## Bedroom 2 10'3" x 17'0"



Double glazed window to the rear and a radiator.

## Shower Room



Superb contemporary suite with low level WC, pedestal washbasin and a walk in shower with mains fed shower,

chrome ladder style radiator, attractive tiled walls and floor and a double glazed window

## Outside



Forecourt area to the front and to the rear, there is a courtyard with roller shutter access door, and an useful store.

## Council Tax Band

The Council Tax Band is Band A.

## Tenure Freehold

We are advised by the Vendors that the property is Freehold. Any prospective purchaser should clarify this with their Solicitor.

## Important Notice - Particulars

Peter Heron Ltd for themselves and for the vendors of this property whose agents they are, give notice that:- The particulars are set out for general guidance only for the intending Purchasers and do not constitute part of an offer or contract. Whilst we endeavour to make our sales particulars accurate and reliable, if there is anything of particular importance which you feel may influence your decision to purchase, please contact the office and we will

be pleased to check the information. Do so particularly, if contemplating travelling some distance to view the property. All descriptions, dimensions, references to conditions and necessary permissions for use and occupation and other details are given in good faith, and are believed to be correct, however any intending purchasers should not rely on them that statements are representations of fact, but must satisfy themselves by inspection or otherwise as to the correctness of each of them. Independent property size verification is recommended.

Lease details, service charges and ground rent (where applicable) are given as a guide only and should be checked and confirmed by your Solicitor prior to exchange of contracts. No person in the employment of Peter Heron Ltd has any authority to make or give any representation or warranty whatever in relation to this property or these particulars, nor to enter into any contract on behalf of Peter Heron Ltd, nor into any contract on behalf of the Vendor. The copyright of all details and photographs remain exclusive to Peter Heron Ltd.

Please note that in the event the purchaser uses the services of Peter Heron Conveyancing in the purchase of their home, Peter Heron Ltd will be paid a completion commission of £300.00 by Movewithus Ltd.

## Fawcett Street Viewings

To arrange an appointment to view this property please contact our Fawcett Street branch on or book viewing online at [peterheron.co.uk](http://peterheron.co.uk)

## Opening Times

Monday to Friday 9.00am - 5.00pm Saturday 9.00am - 12noon

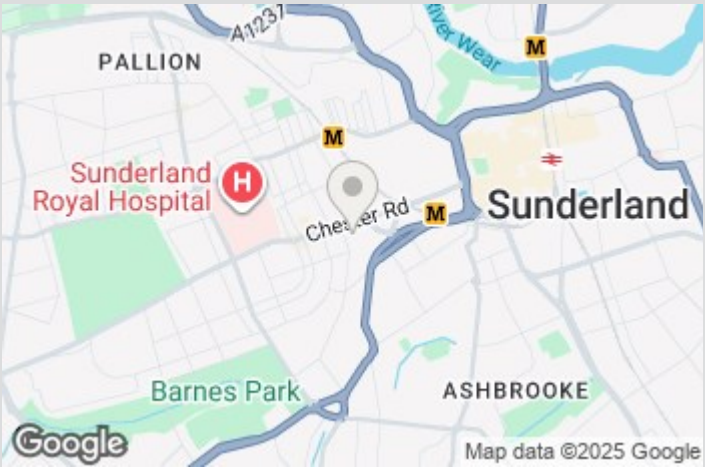
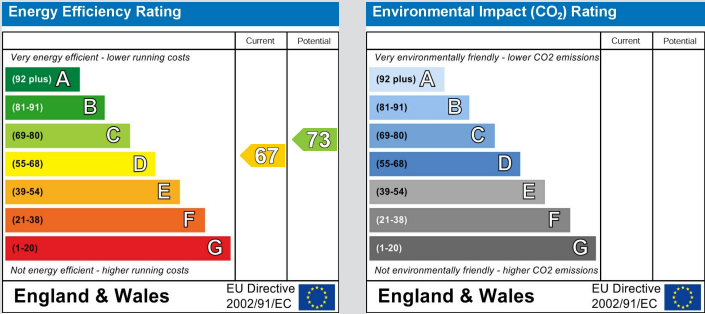
## Ombudsman

Peter Heron Estate Agents are members of The Property Ombudsman and subscribe to The Property Ombudsman Code of Practice.

Visit [www.peterheron.co.uk](http://www.peterheron.co.uk) or call 0191 510 3323

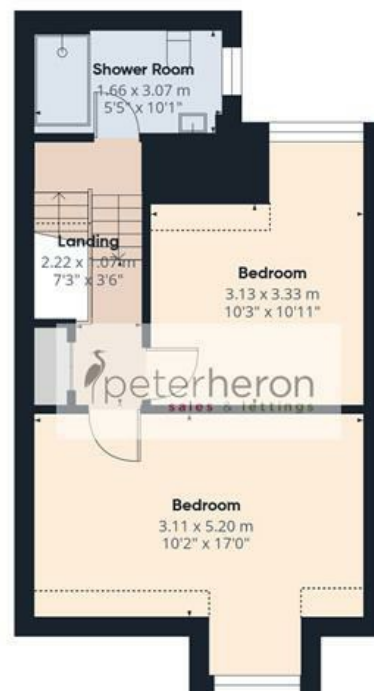
**Tried. Trusted. Recommended.** City Branch 20 Fawcett Street Sunderland SR1 1RH Fulwell Branch 15 Sea Road Fulwell Sunderland SR6 9BS

# MAIN ROOMS AND DIMENSIONS



Visit [www.peterheron.co.uk](http://www.peterheron.co.uk) or call **0191 510 3323**

**Tried. Trusted. Recommended.**   **City Branch** 20 Fawcett Street Sunderland SR1 1RH   **Fulwell Branch** 15 Sea Road Fulwell Sunderland SR6 9BS



**Approximate total area<sup>(1)</sup>**

114.8 m<sup>2</sup>

1238 ft<sup>2</sup>

**Reduced headroom**

2 m<sup>2</sup>

22 ft<sup>2</sup>

(1) Excluding balconies and terraces

Reduced headroom

Below 1.5 m/5 ft

Calculations reference the RICS IPMS 3C standard. Measurements are approximate and not to scale. This floor plan is intended for illustration only.

**GIRAFFE360**

